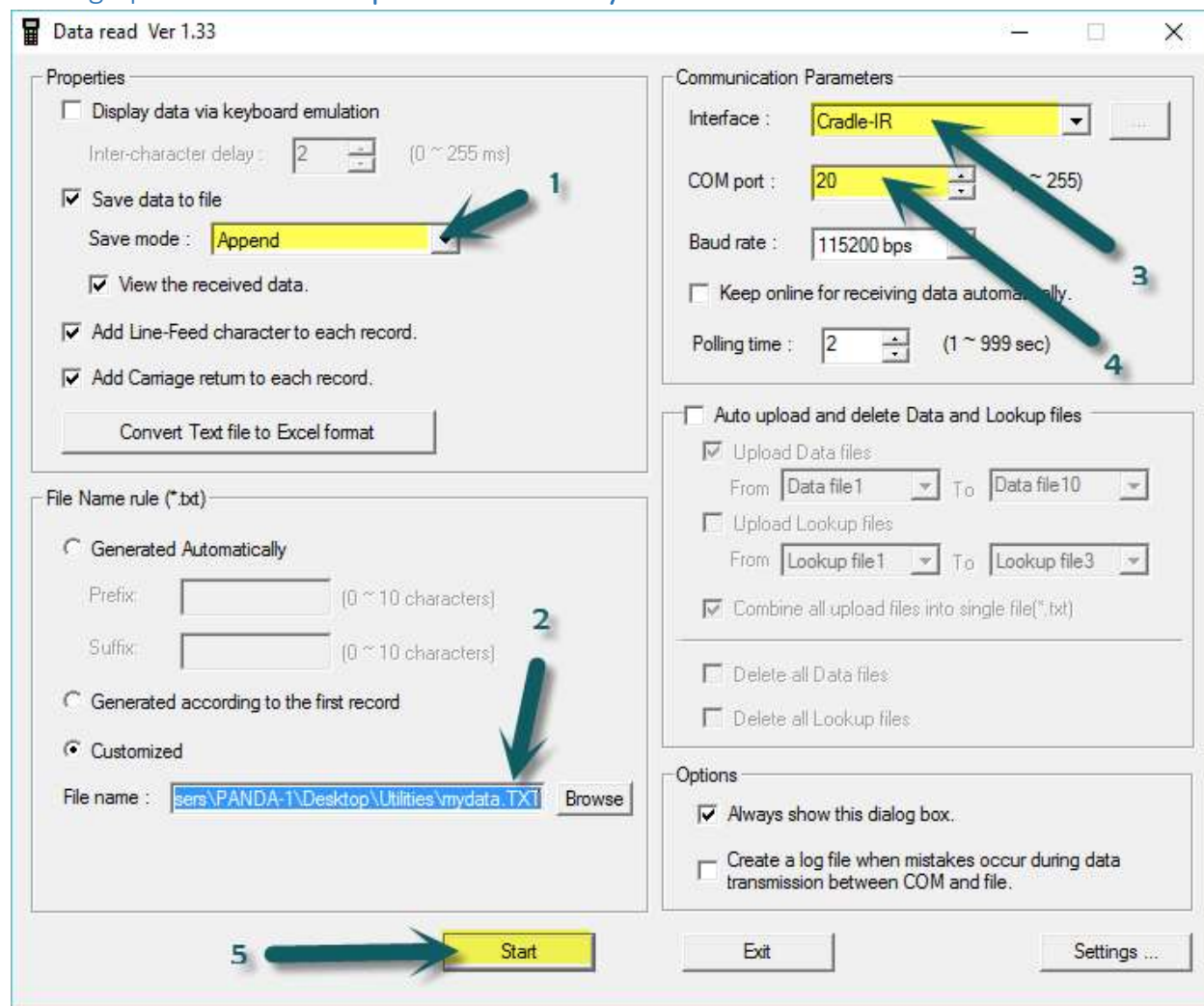


Data Transfer Instructions for the CipherLab 8XXX Barcode Readers

(Must install the drivers first—see appendix)

Setting up Data Read for CipherLab 8000 Only

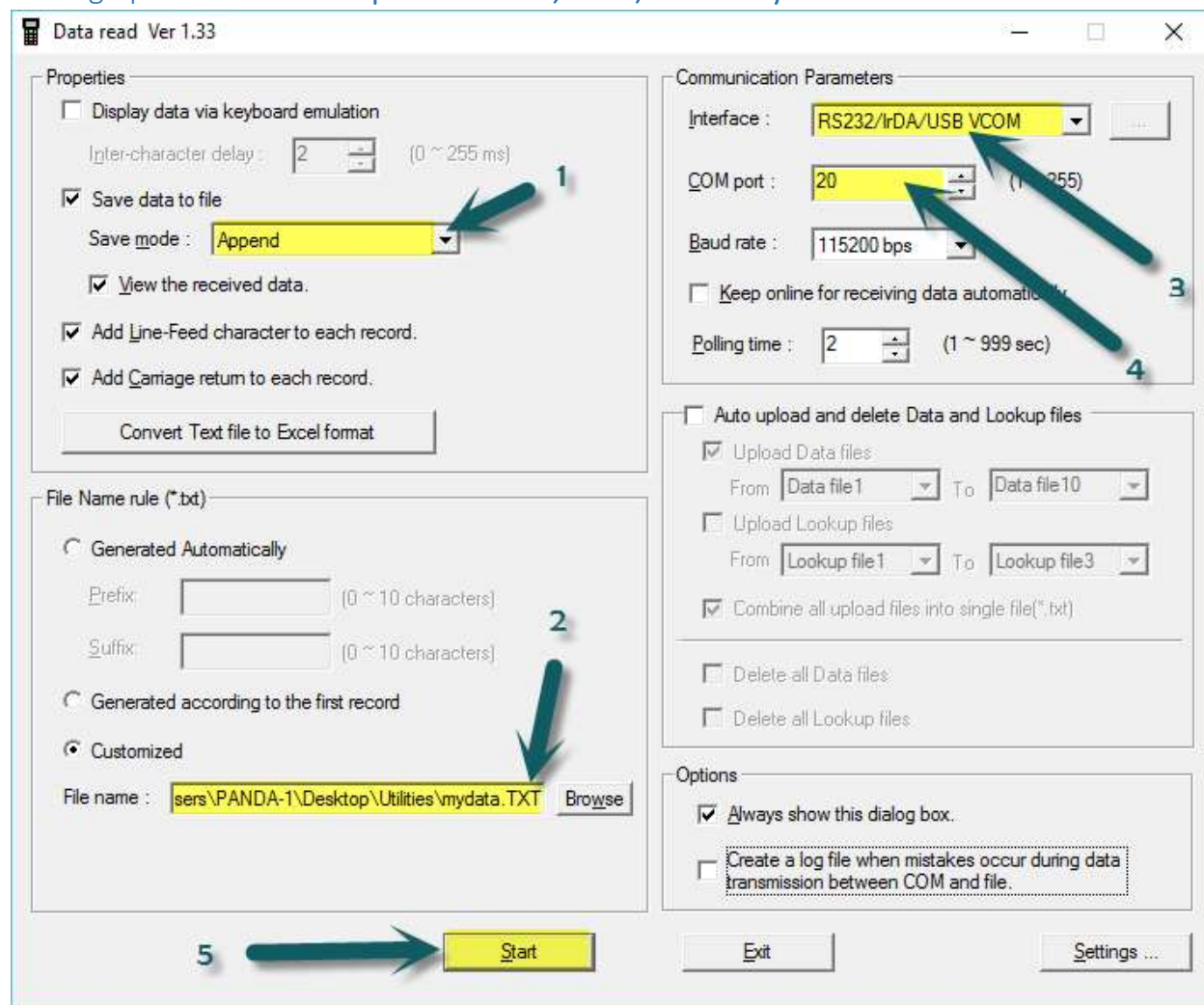


1. Set Save Mode to Append. (Don't want to Overwrite your data)
2. Select where to save your data to (you can choose the File Name by choosing "Customized" or let Data Read do this for you by choosing "Generated Automatically".
3. Interface for the **CipherLab 8000** is **always Cradle-IR**.
4. Com Port is determined by the Computer's "Device Manager" after you install the Silicon Labs Driver.
5. Click Start once you are ready to transfer your data from the reader. (You must also push 2. Upload on the Reader to transfer).

Data Transfer Instructions for the CipherLab 8XXX Barcode Readers

(Must install the drivers first—see appendix)

Setting up Data Read for CipherLab 8200, 8400, 8600 Only



1. Set Save Mode to Append. (Don't want to Overwrite your data)
2. Select where to save your data to (you can choose the File Name by choosing "Customized" or let Data Read do this for you by choosing "Generated Automatically".
3. Interface for the **CipherLab 8200, 8400, and 8600** is always **RS232/IrDA/USB/VCOM**
4. Com Port is determined by the Computer's "Device Manager" after you install the Silicon Labs Driver.
5. Click Start once you are ready to transfer your data from the reader. (You must also push 2. Upload on the Reader to transfer).

APPENDIX—INSTALL DRIVERS

To set up the drivers for the USB Dock or Cables for the CipherLab 8XXX Barcode Readers, please follow the steps outlined below:

1. Install “CP210xVCP Installer_x64.exe” (use x86 if you have a 32 bit computer). “CP210x VCP and accept all defaults.
2. After the install, plug in the CPT-8000 USB dock or the RS232 cable into your PC and go to your device manager to determine the com port assigned. To get to Device Manger on your PC, click on Start | Run and type the following: devmgmt.msc (then click Ok). The Device Manager window will open. Click on the + sign next to Ports (COM & LPT).
3. Note which Com Port is next to CP210x USB to UART Bridge Controller (for example Com21).
4. With this information you can now start up the communications program—”Data_Read.exe” and change the COM Port settings. You will now be able to transfer data from the barcode reader.

